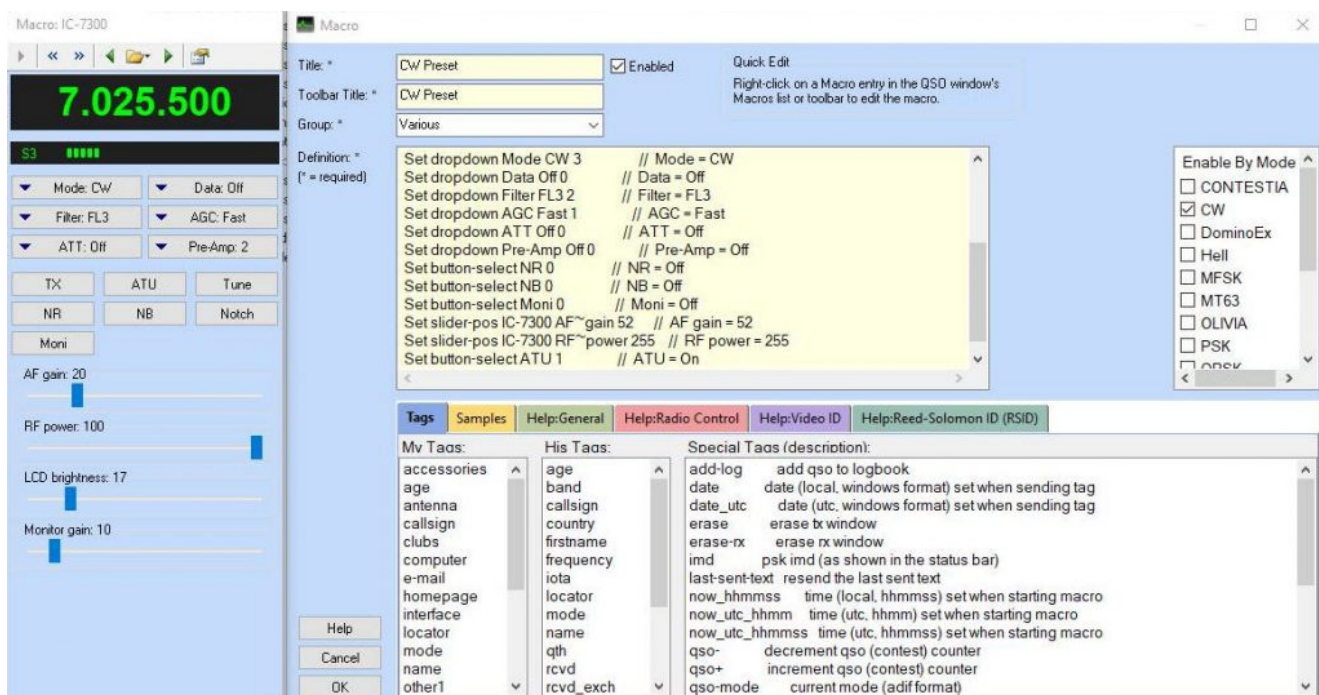
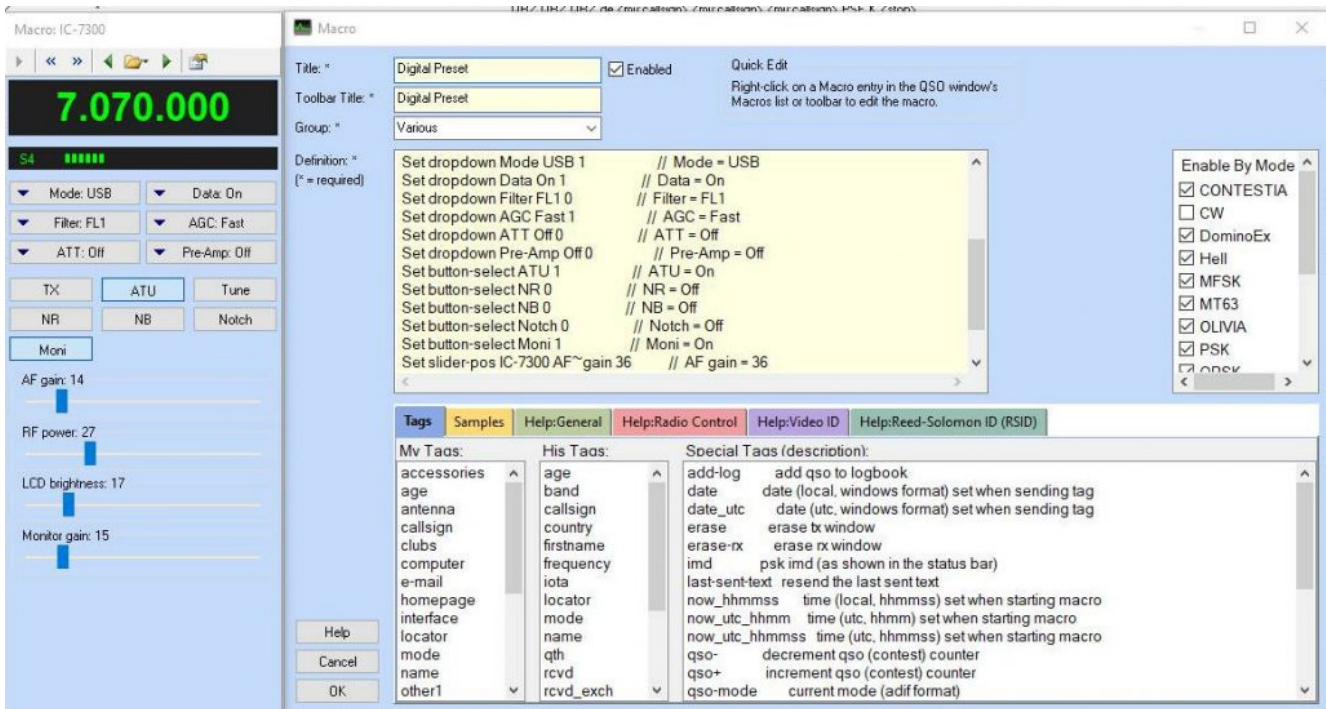


when receiving PSK31. So if I have been in USB or LSB (phone) modes with those options turned on and want to quickly switch over to my digital settings I have been doing it manually. Using the front of the radio.

However, DM780 has a great solution, the radio control macro. One click and I am there.



CW Radio Control Macro



Digital Modes Radio Control Macro

Video

Thank you

Next up... DM780 and CW.

If you have any questions, please ask them here. I prefer the comment section here or in YouTube over e-mail because your comments and questions will help others as well.

Thank you for subscribing to this website. I appreciate the comments, questions and suggestions. You can follow me on [Twitter](#), [Facebook](#), [Instagram](#) and [YouTube](#) if you have those.

Sources:

[Ham Radio Deluxe DM780 Wiki](#)