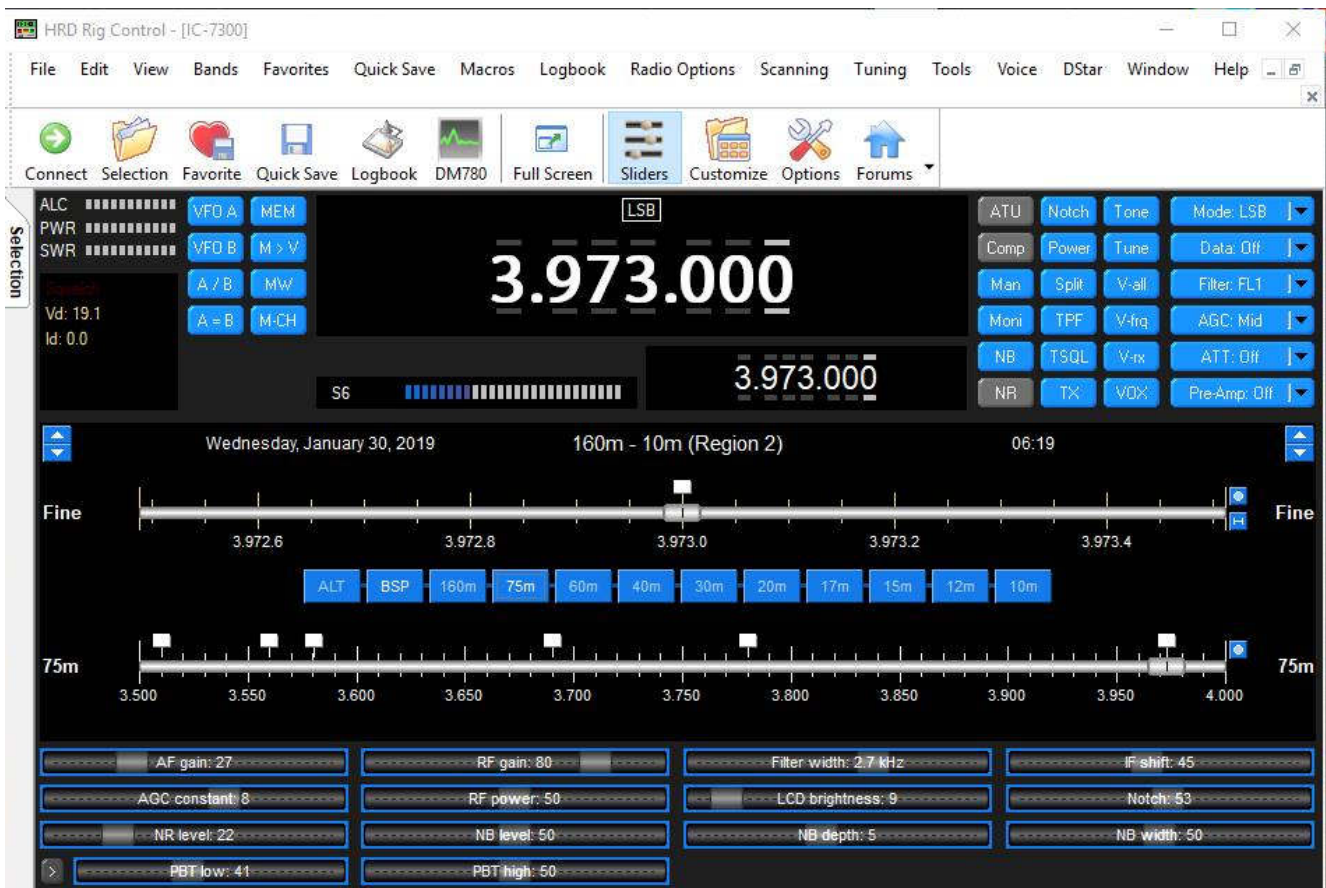


Icom 7300 Ham Radio Deluxe v6.5 Rig Control Quick Start

A long time ago I did a 2 minute video [setting up the Icom 7300 with Ham Radio Deluxe](#), but the software has changed and many more new Hams have the Icom 7300. It's time to update with an article and video. Included is how to customize the HRD rig control window with frequently used sliders and a new color scheme. In the old video I was using the free version of Ham Radio Deluxe and today I will be using the latest paid version. It's quite simple once the Icom USB driver is installed and the radio is setup. In this video we will be using one USB cable.

In the future Ham Radio Deluxe will include a panadapter display like DXLab Suite, N1MM Logger+ and other programs. That's the reason for the USB cable instead of the CI-V cable this time.



HRD Rig Control

Icom 7300 USB Driver

Before connecting the USB cable, download and install the Icom USB driver. You can find it [here](#). It's imperative to do this in the proper order. Connecting the cable before installing the Icom driver will cause problems.

Ham Radio Deluxe v6.5

Download and install the latest Ham Radio Deluxe. This is the paid version and there is a 30 day trial. You can find it here: [Ham Radio Deluxe](#).

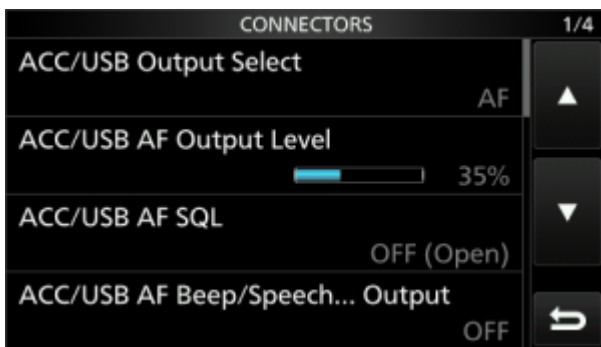
If you are still interested in the free version and getting it running with the Icom 7300, see this article: [Icom 7300 and Ham Radio Deluxe Setup](#).

Icom 7300 Settings

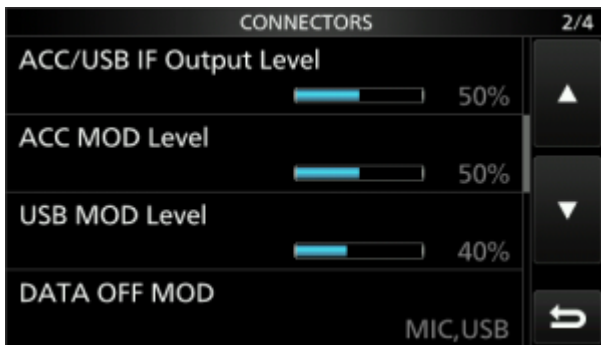
Here are the screen shots for important settings in the radio. Go to MENU>SET>Connectors.

These settings work with all of the Windows software I use.

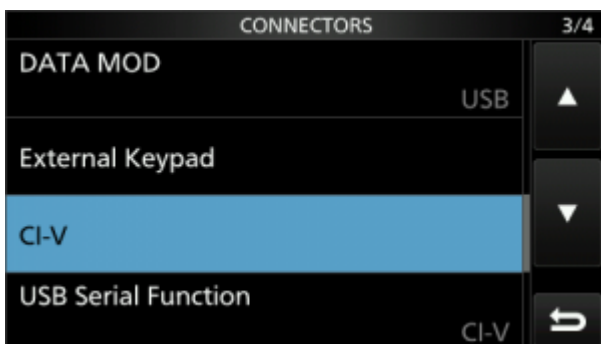
I do not have to change anything in the radio when I change software programs.



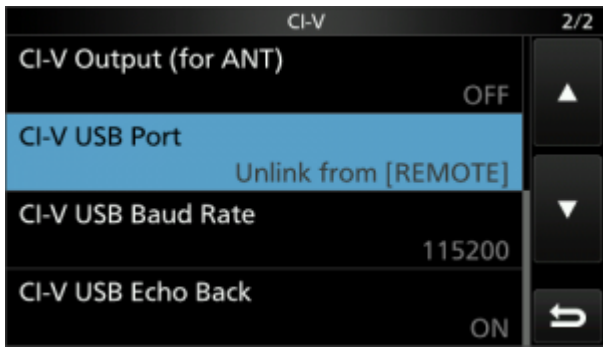
Menu>Set>Connectors



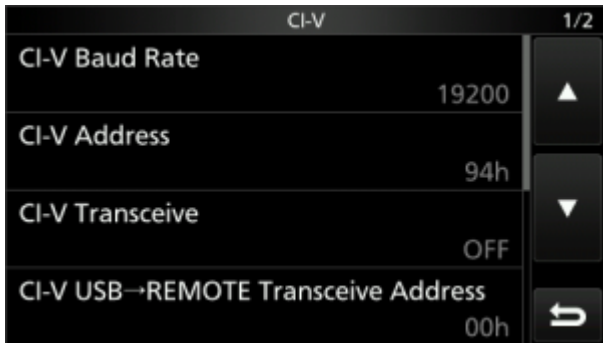
Menu>Set>Connectors



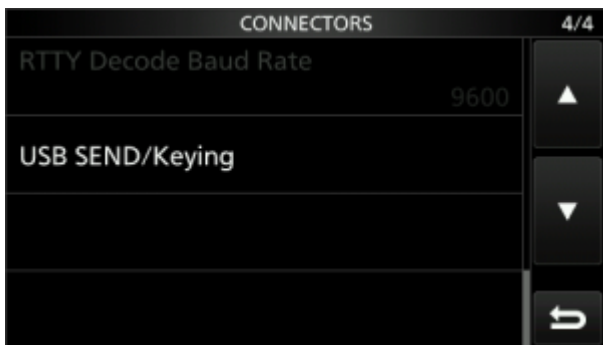
Menu>Set>Connectors



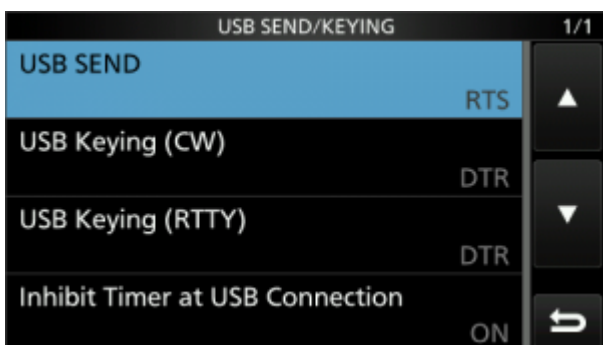
Menu>Set>Connectors>CI - V



Menu>Set>Connectors>CI - V



Menu>Set>Connectors



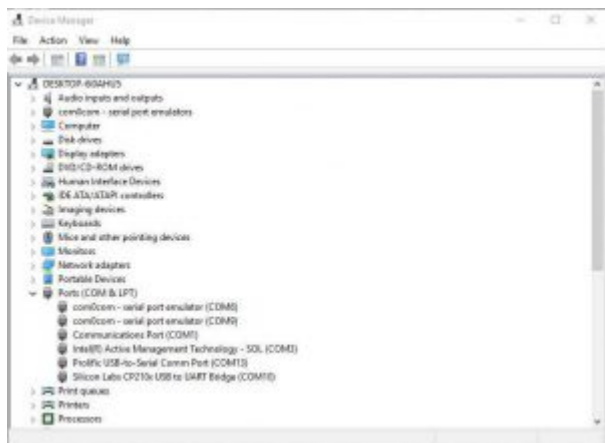
Menu>Set>Connectors>USB SEND/Keying

Ham Radio Deluxe Quick Start

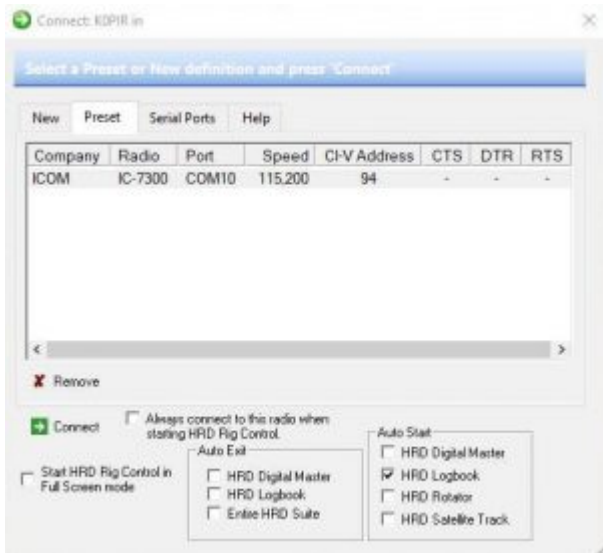
This will work with other transceivers as well. Just use the model radio you have.



HRD Connect Window



Device Manager



HRD Connect Window Preset



HRD Rig Control

1. Open Ham Radio Deluxe.
2. The connect window appears
 1. ICOM (or your radios company)
 2. IC-7300 (or your radio model)
 3. Your COM Port
 4. Speed 115,200 (or your speed)
 5. CI-V is default for Icom 7300 (94)
 6. nothing checked for CTS, DTR or RTS
 7. Press Connect.
3. After connecting one time you will have a preset you can use.

4. Ham Radio Deluxe Rig Control Opens. Yours will look different because I have customized mine. See the link below.

Ham Radio Deluxe Customized Rig Control Window

The video and images below shows some customization of buttons and sliders that come in handy when operating. There is also a download of my color scheme below.



Buttons



Sliders

Icom 7300 Ham Radio Deluxe v6.5 Rig Control Quick Start Video

It's all in the video!

Thank you

Are you waiting for the panadapter display to show up in Ham Radio Deluxe?

I prefer the comment section here or in YouTube over e-mail because your comments and questions will help others as well.

Thank you for subscribing to this website. I appreciate the comments, questions and suggestions. You can follow me on [Twitter](#), [Facebook](#), [Instagram](#) and [YouTube](#) if you have those.

Please stay in touch and best 73,

Rich, K0PIR

Sources:

[Icom 7300 USB Driver Download](#)

[Ham Radio Deluxe Download](#)

[K0PIR IC-7300 Color Scheme for HRD](#) (Download, extract and load file using HRD Customize Layout>Schemes. Download and install at your own risk)