

Icom 7610 RS-BA1 Installation and Settings

I finally made a video on the Icom 7610 RS-BA1 remote software. Although I have not been using it for very long, this first video shows how to install it from the Icom CD-ROM, apply the update from the Icom website and of course shows the settings in the radio and RS-BA1 software. Everything works as advertised and I am very pleased with the audio quality using just my laptop speakers and laptop internal mic.

I am using this on my private home network (LAN) and have not used it outside my home yet. Accessing it on the private network is a good start.

Icom 7610 RS-BA1 Network Radio Settings

First, connect the Icom 7610 to your network with the ethernet port on the rear of the radio. More information can be found here: [Icom 7610 Clock, Timers and Network](#).

In the video below you'll see how I have my radio setup. There may be one or two things different from your radio configuration. Try to determine if it is necessary to change yours.

One thing to consider is DATA OFF MOD. I'll bet a lot of Hams are using MIC, ACC and I use MIC,USB. That's not a big deal and doesn't need to be changed if you don't want to.

When powering off the radio, put it in Standby (For remote control).

[See Icom 7610 Screen Captures and "Things to watch out for"](#).

Icom 7610 RS-BA1 Utility and Remote Software

You'll need to buy a CD-ROM with RS-BA1 software if you don't already have it. I got mine from HRO in Denver.

Two software applications are installed off the CD-ROM. The Remote Utility software and the Remote Control software.

After installing those from the CD-ROM, go to the Icom website and install the latest update. You can find it [HERE](#). Scroll down on that page to find the RS-BA1 section.

Open the Utility and click on the "Add" button to setup and connect to the sever. The Icom 7610 has an internal server. The COM port you select is a virtual port, so the # is not important. I have tried a few and they all worked.

Just verify that you use the same virtual COM port # in the Remote Control as you have set in the Utility software. This is in the video below.

After you are connected to the radio with the Icom Remote Utility program open the Icom Remote Control program. Configure the Connect Set.

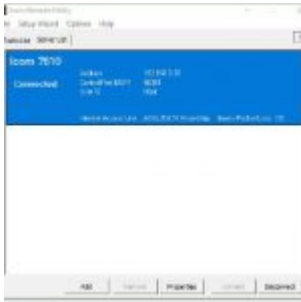
When setting up the Connect Set in RS-BA1, you can use LAN (thanks [Jeff, W6FCC](#)) for the Connection instead of USB. See the picture below.

Have a look at the Remote Setting and the MOD Select. MOD Select is LAN. Look at Remote Setting too. See pictures and video below.

Click the Power On or Connect button in the RS-BA1 Remote Control.. With the "REMOTE" enabled you can control the radio.

I have a tip in the video for setting the F1 key on the keyboard for TX/RX. It works better than the mouse.

Laptop with RS-BA1 and Screen Captures



Server List



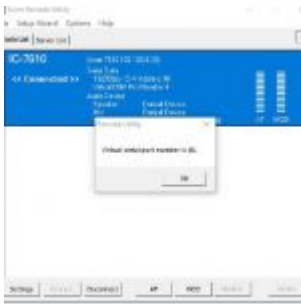
Server Properties



Radio List



Radio Settings



Connect Com Port



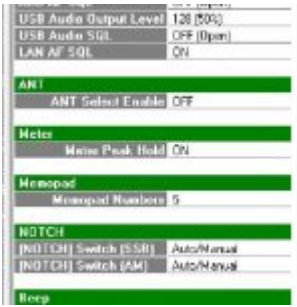
AF Settings



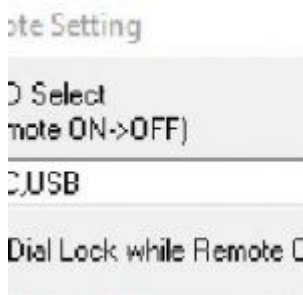
MOD Settings



RS-BA1 Connect Set



RS-BA1 Set Mode



RS-BA1 Remote Set



RS-BA1 MOD Set

Icom 7610 RS-BA1 Fine Tuning

Once I am more familiar with RS-BA1 I'll do another video and show how I fined tuned my software to transmit SSB, and CW. For now it's working and I get "good" audio reports on SSB.

Things to Consider

- When we use RS-BA1 to connect to the radio we need CI-V Transceive ON in the radio. It will switch ON

automatically if it is OFF.

- To use the Scope in RS-BA1 we need Unlink from [REMOTE] setup properly in the radio.
- DATA OFF MOD will automatically change in the radio to LAN when we connect. It should then go back to your normal setting MIC,USB or MIC,ACC. Sometimes it doesn't. It just depends on how you shutdown the software. You'll have to experiment with it.
- Sometimes when I connect with the utility I get audio from the radio right away. That's just because the radio is already powered ON. (See below)
- Same with the Remote Power On. Sometimes when I open it I don't have to connect (power on) because the radio is already ON. (See below)
- Having MONITOR enabled on the Icom 7610 will create an echo when transmitting using remote software.

"Try this when you start to exit your remote session exit the RS-BA1 Remote Control window first by clicking the X in the top right of the window or the exit button on the top menu. Then click the disconnect button at the bottom of the Icom Remote Utility window you should get a dialog box that asks if you want to disconnect the radio, click on YES and finally the X at the top right of that window. You should then see a small window that indicates it is closing the remote utility.

This procedure always puts the rig back in the state it was before the remote session at my QTH." – [Julio, W4HY](#)

[\(Groups.io\)](#)

Icom 7610 RS-BA1 Installation and Settings Video

Conclusion

With my laptop I can use my radio from any room in the house. What a treat!

As I said, I haven't been using it for very long and I am still learning. This should at least help Hams get connected. In the future I hope to show a good and safe way to connect to the radio from outside of the private (home) network.

Have a look at the video and let me know what you think. Does it work for you? Any tips?

Thank you again for coming by and I appreciate all of the comments. If you have a suggestion or question please comment below. I will do my best to answer it and your experience will undoubtedly help others as well.

Sources:

[Icom Firmware Updates / Software Downloads – Important RS-BA1 Update](#)

[RS-BA1 Manual](#)

[Groups.io RS-BA1 Group](#)

[Facebook RS-BA1 Page](#)