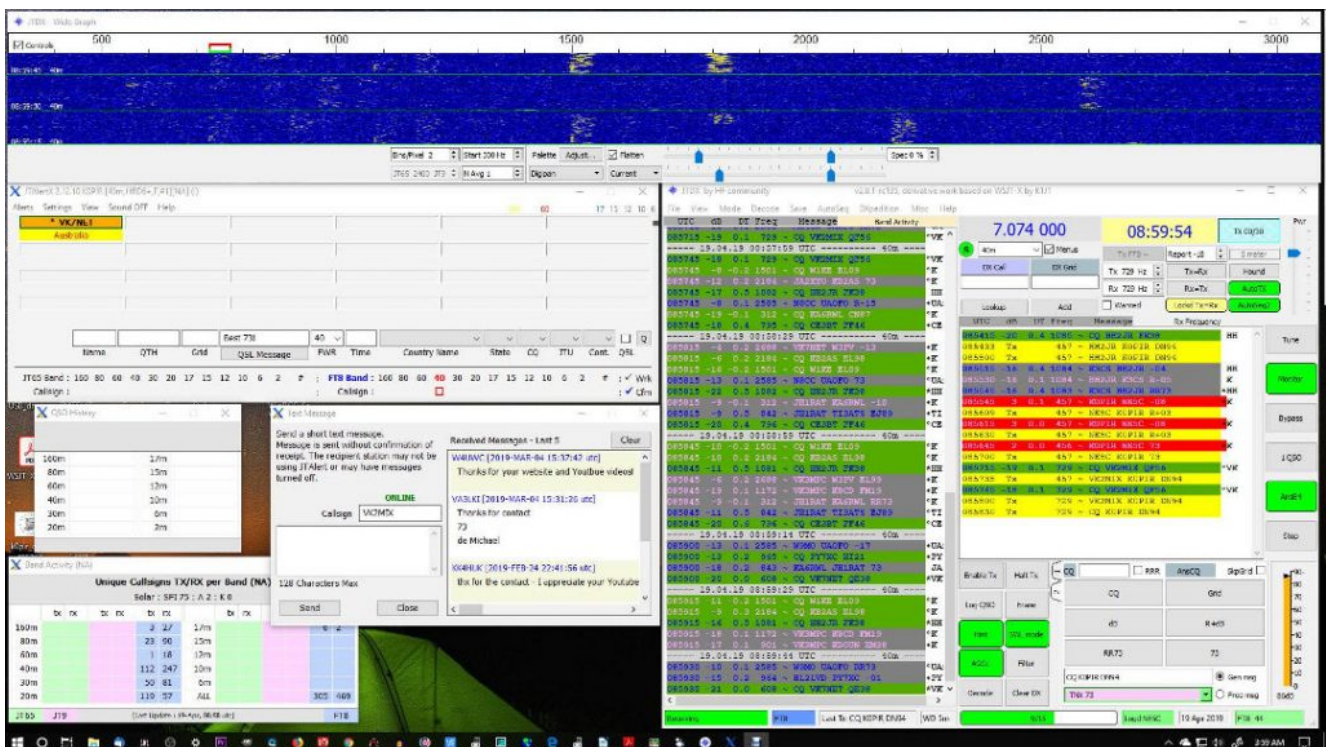


# JTDX FT8 with Ham Radio Deluxe, JTAlert and the Icom 7610

Have you heard of JTDX? It's similar to WSJT-X and will operate FT8 if you download and use the evaluation version, JTDX v2.0.1-rc135 (as of this writing). So why JTDX? A number of fellow Hams have suggested I do a video on this. Many say it is better at decoding than WSJT-X. I have been using it with the Icom 7610. If you are using the Icom 7300, it is virtually the same setup.

## Icom 7610 Settings

Have a look at my [Icom 7610 screen captures page](#). The 7610 is in USB-D1 mode for digital operation. I have the filter BW at 3.6k, noise blanker off, noise reduction off and AGC set to fast. I have found I like AGC set to fast. Turning AGC off is good too, especially for JT65 and JT9.



JTDX

## **JTDX Download and Install**

You can download and install [JTDX from this link](#). I have installed version JTDX v2.0.1-rc135 because I want to use FT8. It appears to be working just fine for me and I like some of the features it has over WSJT-X. See the video below.

It's a simple installation, similar to WSJT-X.

## **JTDX Settings**

I have some screen captures below. In the Icom 7610 and Icom 7300 I have left all of the internal radio settings the same.

While operating, one thing to be aware of is the RX level. Try to keep it between 30dB and 50dB. I show how to set this in the video below.

The Pwr level slider is the same as the one in WSJT-X. I use it to set the ALC on my Icom radios. I have an article and video showing how I set my power level for digital modes. See: [Icom 7300/7610 Adjusting RF Power Digital Modes](#)

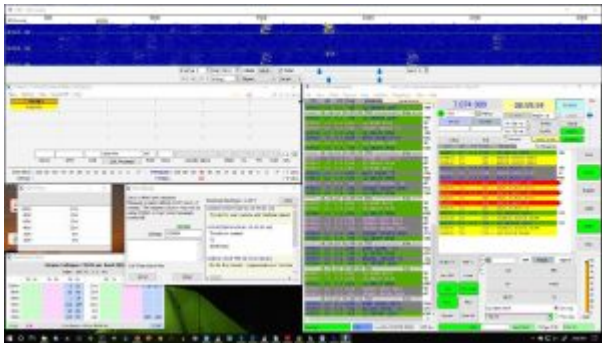
## **JTAlert**

If you want to log your contacts into HRD Logbook try using JTAlert. It works very well and has some other nice features. You can [download and install it from this link](#).

I use it to log into HRD Logbook, but I also use it to pull the name and QTH from QRZ.com.

## **Screen Captures – JTDX and JTAlert Settings**

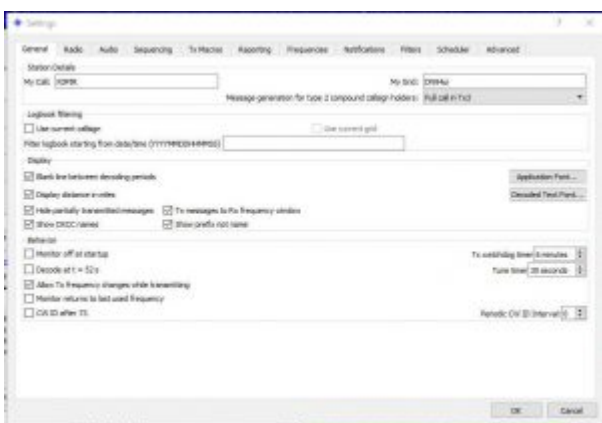
*Click on an image and use your back button to return to this page.*



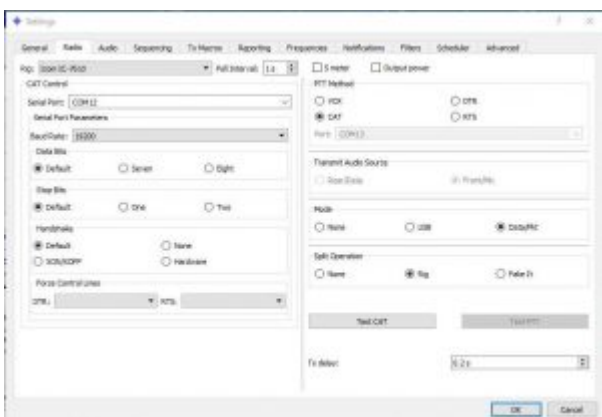
JTDX



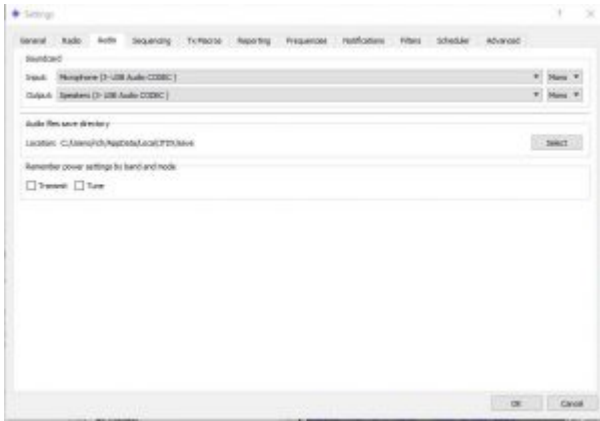
JTDX Wide Graph Settings



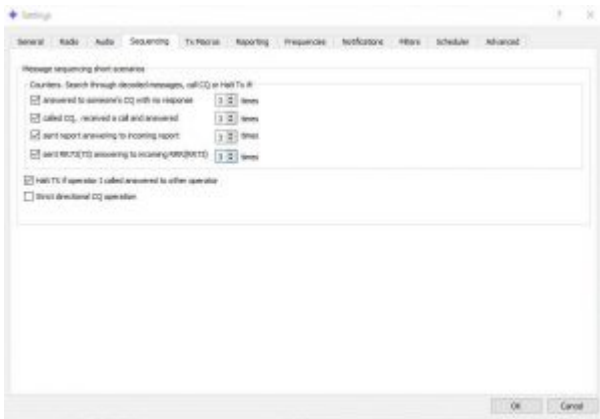
JTDX Settings General Tab



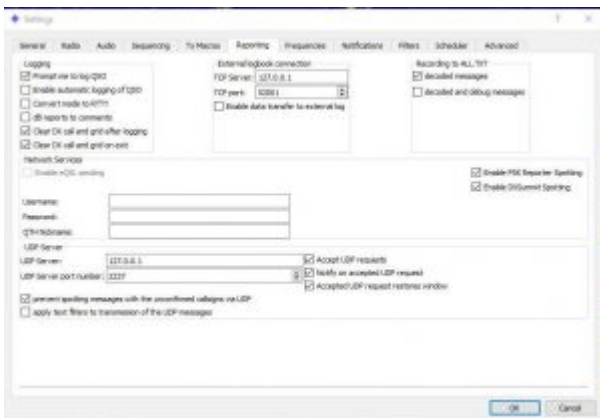
JTDX Settings Radio Tab



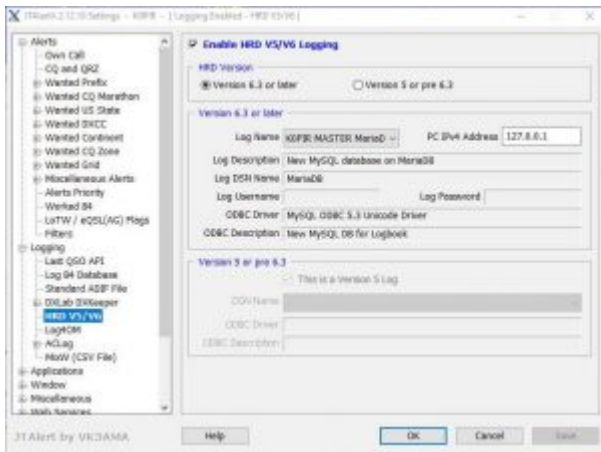
JTDX Settings Audio Tab



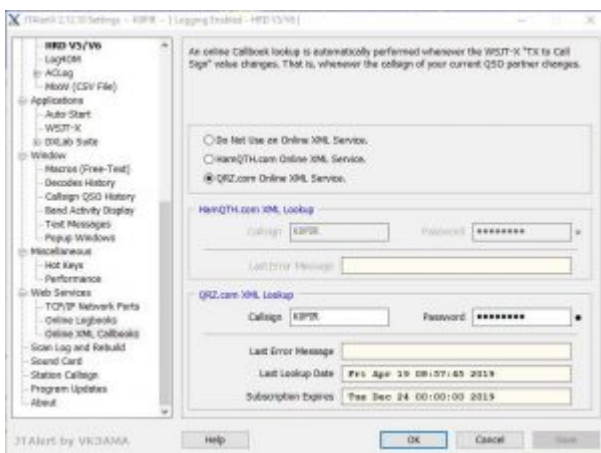
JTDX Settings Sequencing Tab



JTDX Settings Reporting Tab



JT Alert Settings Logging



JT Alert Settings Online xml Callbooks

## Video

## Thank you

If you have any questions, please ask them here. I prefer the comment section here or in YouTube over e-mail because your comments and questions will help others as well.

Thank you for subscribing to this website. I appreciate the comments, questions and suggestions. You can follow me on [Twitter](#), [Facebook](#), [Instagram](#) and [YouTube](#).

73,  
Rich, K0PIR

## **Sources**

[JTDX](#)

[JTDX Manual](#)

[JTAlert](#)