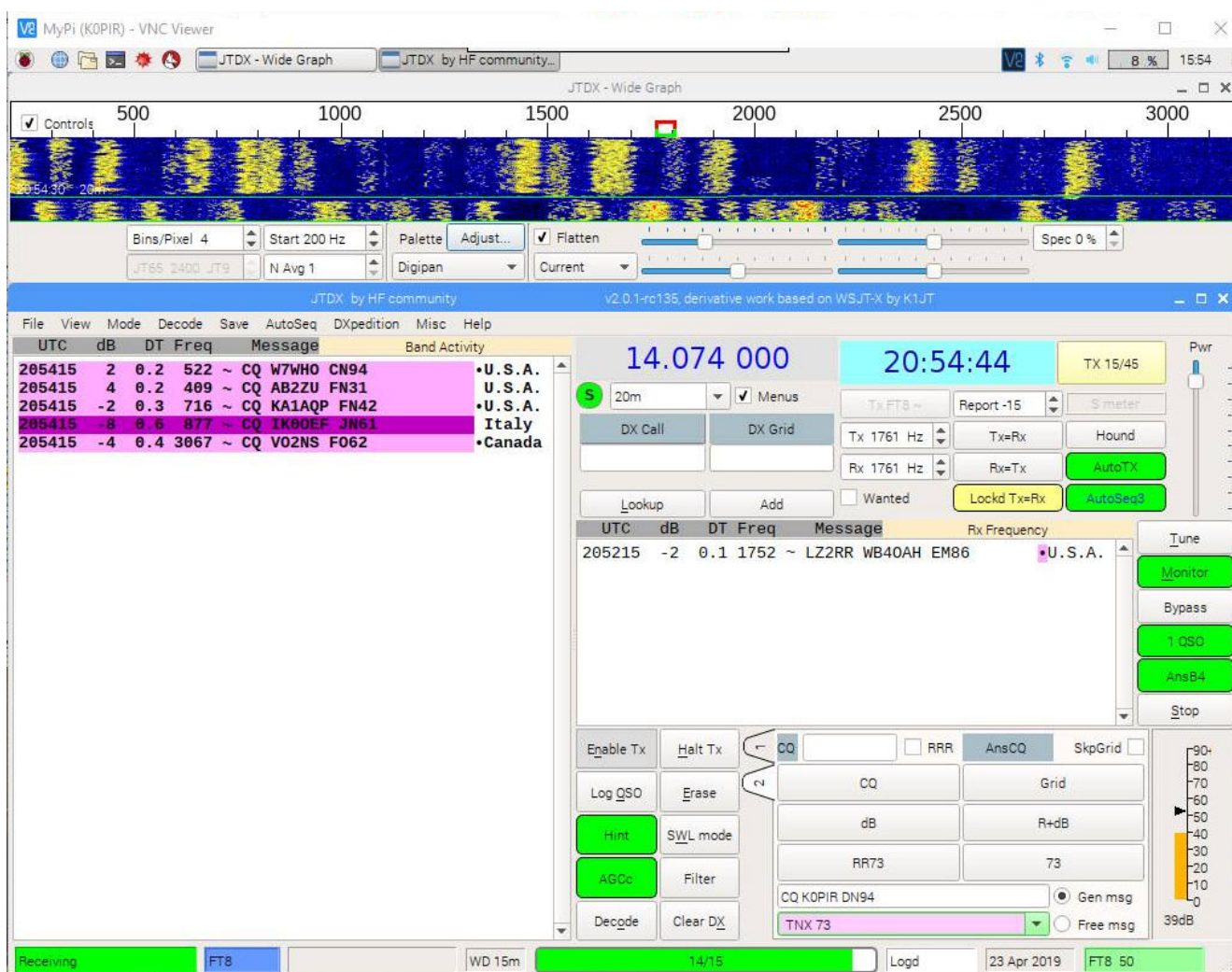


# JTDX Raspberry Pi 3 with DX Keeper and Icom 7610

JTDX Raspberry Pi 3! Does JTDX work good on a small \$40 Raspberry Pi 3? You bet it does. This is not something I thought would work well, but with a few adjustments in the JTDX settings it ran very smooth. [WSJT-X runs good on a RPi3 too.](#)



JTDX

## Icom 7610

I am using my Icom 7610 with a USB cable, but whatever radio you're using if it includes a USB Audio CODEC it should be a

smooth operation. Even if you are using a Signalink USB with your radio, the RPi3 should recognize the soundcard and you'll see a USB Audio CODEC when setting up JTDX.

## **Raspberry Pi 3 Starter Kit**

If you are new to the Raspberry Pi 3 I recommend getting a [Raspberry Pi 3 Starter Kit](#). It's a little more expensive, but, these come packaged with everything you need. Get one with a case, power supply, RPi3 Model B+ board, SD card with NOOBS (software) and you'll be set to go. These have wireless and also have an ethernet port to make things really simple.

You'll need to decide how to configure it. Do you want to run VNC or will it have a dedicated monitor keyboard and mouse? Start with my article [Raspberry Pi 3 Ham Radio Projects](#).

There is an abundance of websites with information on how to configure the Raspberry Pi 3. Start with [Raspberry Pi Documentation](#).

## **JTDX Raspberry Pi 3 Installation**

First, if you already have a RPi3, get your [Raspberry Pi 3 up to date](#).

Next, go to the [JTDX website](#), download and install the latest evaluation version for the Raspberry Pi3. This version includes FT8.

I used the Raspberry Pi3 browser, downloaded the file to my downloads folder, then double clicked it to start the installation. It installed and also updated the dependencies for it to run.

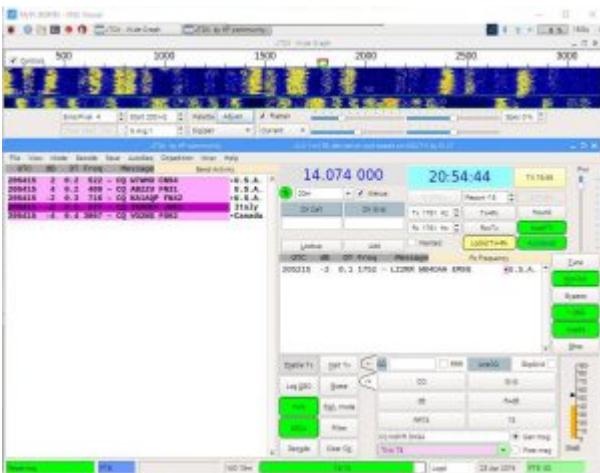
After the installation I needed to restart the RPi3 so JTDX would show up in the menu.

# JTDX Raspberry Pi 3 Settings

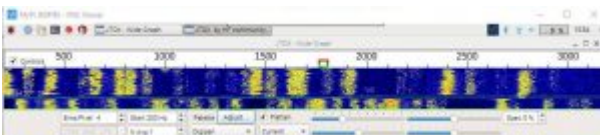
If you're not familiar with Linux or the RPi3, it will look unusual to you. No problem, just look at the screen captures below and the video. *Click on an image to see a larger picture and use the back button on your browser to return to this page.*



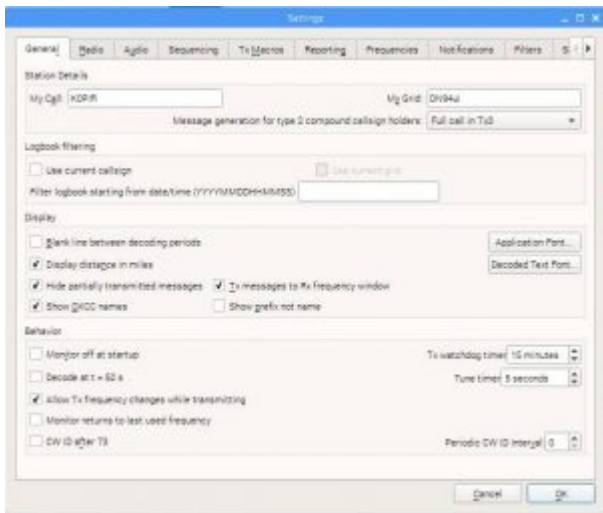
JTDX RPi3 Menu



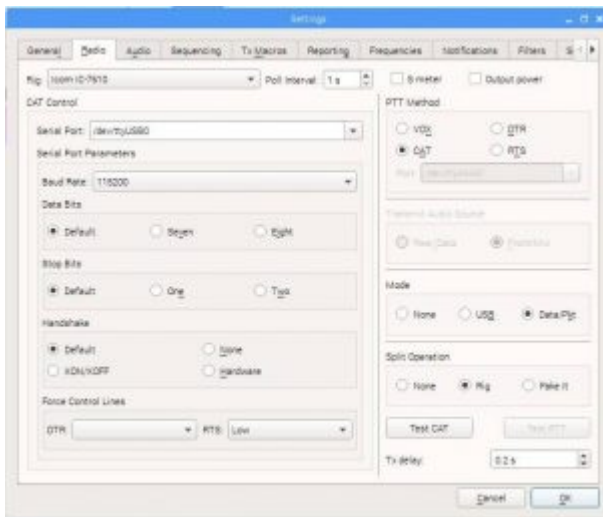
JTDX



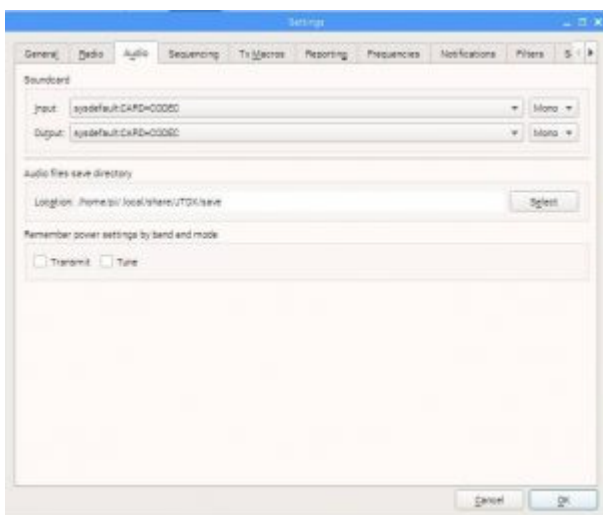
JTDX wide graph



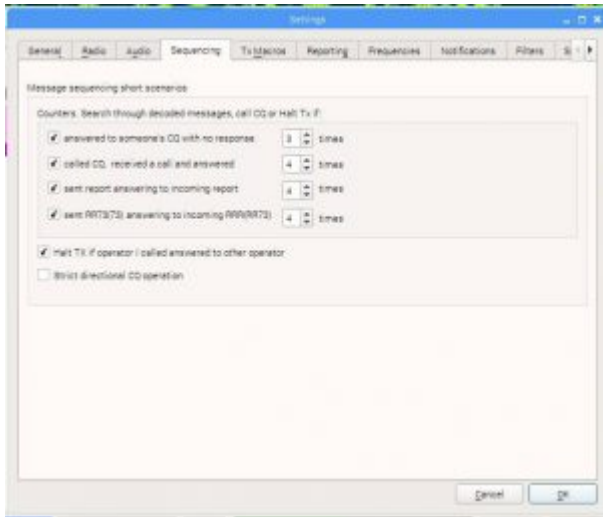
JTDX general



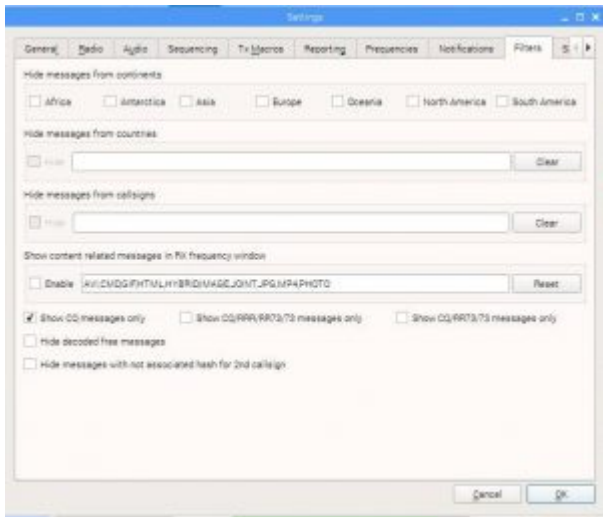
JTDX radio



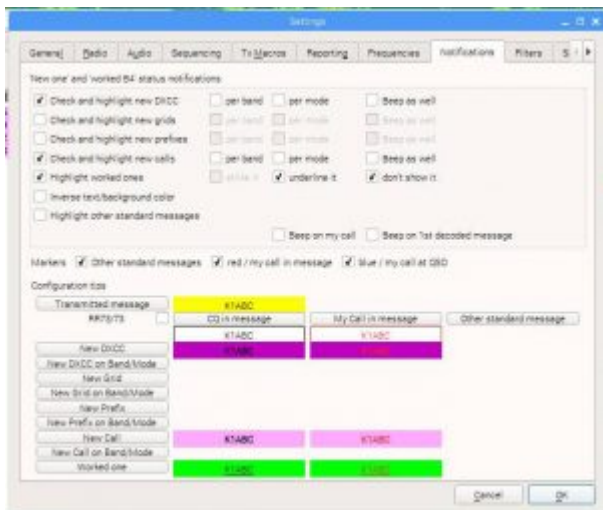
JTDX AUDIO



JTDX sequencing

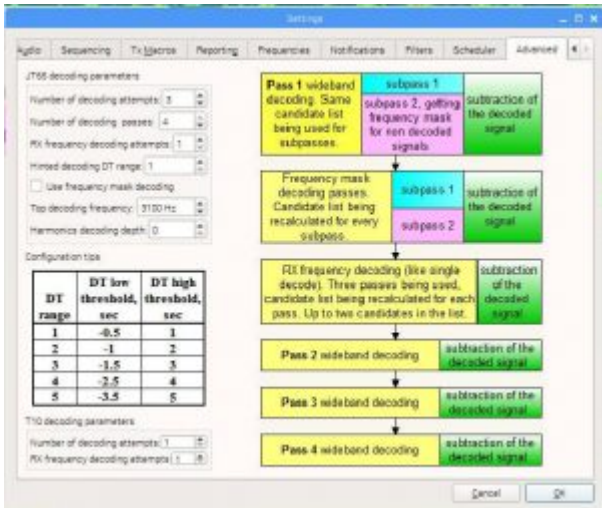


JTDX filters

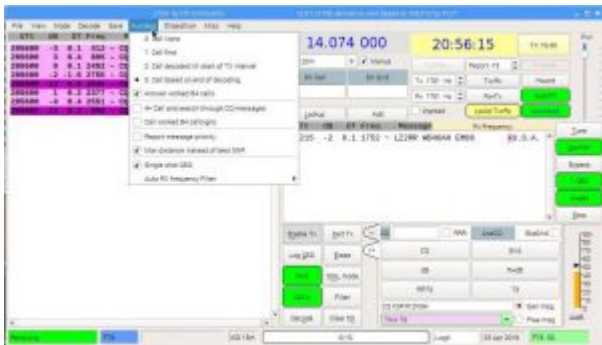


JTDX notifications





JTDX advanced



JTDX auto sequence



JTDX decode sensitivity



JTDX ft8 narrow filter



JTDX ft8 threads



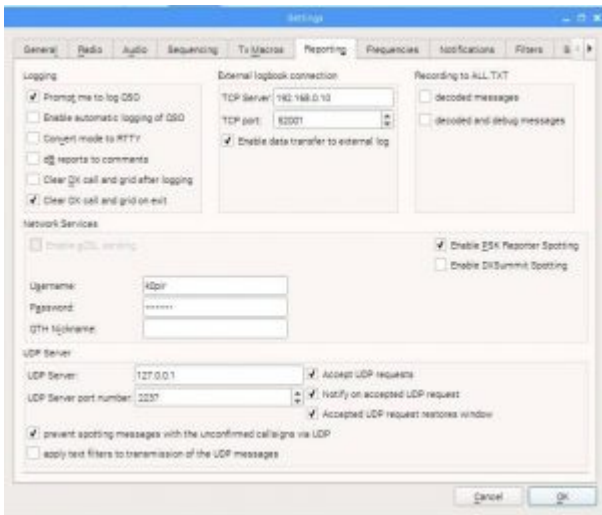
JTDX ft8 wide decoding



JTDX misc



JTDX QSO sensitivity



JTDX reporting

To keep JTDX running smoothly, try these settings:

- Decode> FT8 decoding>wideband decoding – fast
- Decode>FT8 decoding>narrow filter – deep
- Misc tab – Erase band activity window at start of decoding

## Videos

## Thank you

If you have any questions, please ask them here. I prefer the comment section here or in YouTube over e-mail because your comments and questions will help others as well.

Thank you for subscribing to this website. I appreciate the



comments, questions and suggestions. You can follow me on [Twitter](#), [Facebook](#), [Instagram](#) and [YouTube](#).

73,

Rich, K0PIR