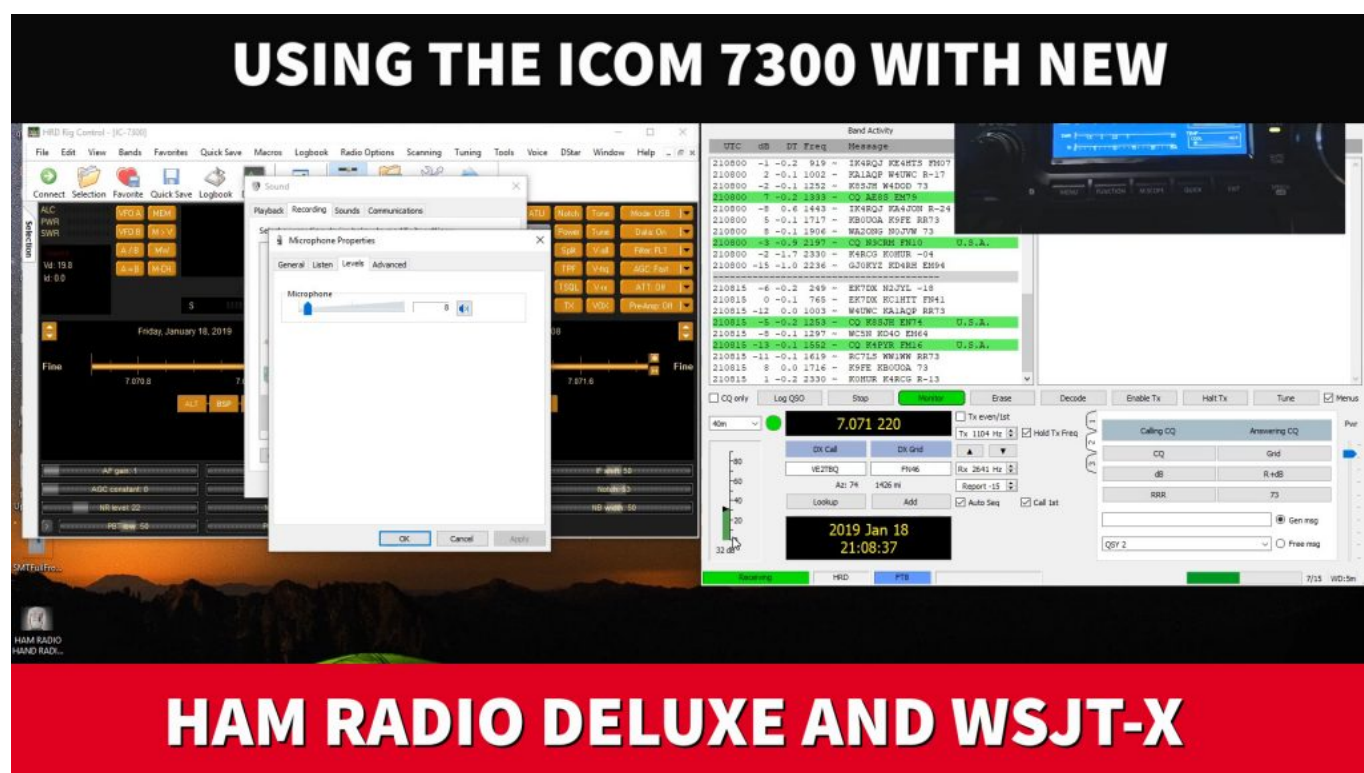


Using the Icom 7300 with NEW Ham Radio Deluxe and WSJT-X

New Ham Radio Deluxe and WSJT-X Video! This is a refresher with the latest software. In the video below Ham Radio Deluxe v6.5 and WSJT-X v2.0. There are a few differences from my older videos that are noticeable. See setting receive level and a small glitch in WSJT-X. Also, QSO forwarding in HRD Logbook.



New Ham Radio Deluxe v6.5

One of the most noticeable differences with Ham Radio Deluxe is the ability to forward QSO's from WSJT-X to the HRD Logbook. I have an article on this: [HRD Logbook and WSJT-X Integration](#).

QSO forwarding is in the video below.

There is also a possible glitch with setting the mode using Ham Radio Deluxe as the rig in WSJT-X and my solution to that

in the video.

WSJT-X v2.0

WSJT-X 2.0 is what prompted me to do a new video. WSJT-X looks different now. For one, the WSJT-X main window does not include a receive level slider. It's been gone a while. The receive level is set using either Windows sound properties or ACC/USB AF Output Level in the Icom 7300. This is shown in the video.

The new WSJT-x v2.0 also has a minor glitch with the logging window and retaining the power or comment fields. This is in the video and not a big problem. It will be fixed.

As always, timing is crucial with FT8 and other modes in WSJT-X. I have been using [NetTime](#) and it works very well.

Icom 7300 New Firmware v1.30

The Icom 7300 has been updated over the years so in the video I'll go over my internal settings. The related settings can also be found on my screen captures page, [K0PIR Screen Captures](#).

Refresh Video with Ham Radio Deluxe v6.5 and WSJT-X v2.0

I apologize, I tried to cover too much in this video, so please comment or ask your questions below. I'll be happy to clarify.

1. Setting up IC-7300: 00:50
2. Receiver Setup: 08:06
3. HRD Connect: 07:52
4. WSJT-X Settings: 09:03
5. JT Alert: 15:34 (just for demonstration)
6. Making a QSO: 17:05

7. HRD Logbook: 20:38

NOTE: I was using JT Alert just for demonstration. To continue to use it I would need to enable logging in it (to HRD Logbook) and disable QSO Forwarding in HRD Logbook, otherwise the alerts will not be accurate.

Comments & Questions

I prefer the comment section here or in YouTube over e-mail because your questions will undoubtedly help others here as well.

Thank you for subscribing to this website. I appreciate the comments, questions and suggestions. You can follow me on [Twitter](#), [Facebook](#), [Instagram](#) and [YouTube](#) if you have those.

Please stay in touch and best 73,

Rich, KØPIR

Resources or Links

[Icom USB Driver and Firmware](#)

[KØPIR Screen Captures](#)

[KØPIR TX Power](#)

[KØPIR Receive Settings](#)

[WSJT-X The Easy Way](#)

[WSJT-X and HRD QSO Forwarding](#)

[JT Alert](#)