

WSJT-X FT8 Using CI-V Cable Combined with Ham Radio Deluxe

The last part of this series with Ham Radio Deluxe is adding WSJT-X FT8 to it. In this setup I'm using the CI-V cable for rig (Icom 7300) control in WSJT-X as opposed to using [Ham Radio Deluxe as the rig in WSJT-X](#). There are advantages doing it this way. See the video below.

WSJT-X FT8

WSJT-X is a popular program for JT65, JT9 and the most popular mode is FT8. In the video below you'll see WSJT-X FT8. WSJT-X is also a very easy program to setup and operate, especially if you are using a radio like the Icom 7300 or Icom 7610 that has built-in sound capabilities. I have [videos and articles on WSJT-X](#) and there are 3 or 4 good ways to integrate it with Ham Radio Deluxe.

The screenshot displays the WSJT-X software interface. At the top, a waterfall plot shows signal activity across a frequency range from 500 to 3000 kHz. Below the plot, the main interface is divided into several panels:

- Left Panel:** A list of stations with columns for UTC, dB, DT, Freq, and Message. The current station is highlighted in red.
- Center Panel:** A control panel for the selected station, showing fields for Call, Name, and various settings.
- Right Panel:** A call log table with columns for Time, Call, Mode, Snt, Rcvd, Band, Name, and Country. The current call is highlighted in red.

The interface also shows a digital display of the current frequency (3.572500 MHz) and a digital display of the current time (12:26:41).

WSJT-X FT8 Logging to HRD Logbook

In this configuration I'm using QSO forwarding in HRD Logbook. It works very well. See my article [Using the Icom 7300 with NEW Ham Radio Deluxe and WSJT-X](#).

Multiple ways to Integrate WSJT-X with Ham Radio Deluxe

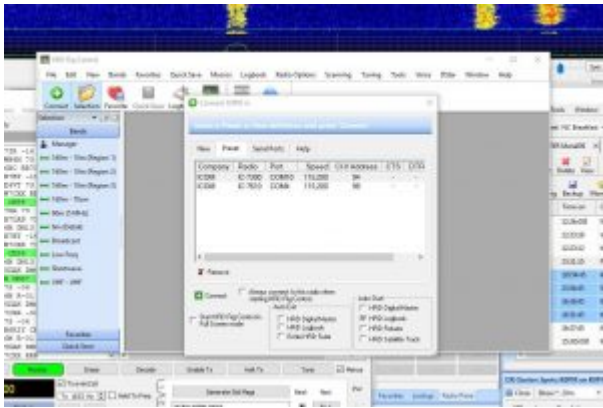
1. Using two cables (it works well with other logging programs as well). The USB cable for HRD rig control and the CI-V cable for WSJT-X rig control.
2. [One USB cable. Get HRD up and running with the USB cable and using it for rig control in HRD. WSJT-X uses Ham Radio Deluxe as the Rig in it's settings.](#)
3. One USB cable (preferred by many). Same as #2, but close HRD rig control leaving HRD Logbook open. The USB cable is used for Rig control in WSJT-X.
4. One USB cable. Use a virtual serial port emulator (splitter) to split the COM port so HRD Rig Control and WSJT-X can control the radio.

We will be completeing #1 in the video below.

I have been using two cables since I got the Icom 7300 and it works very well. See my article and video: [N3FJP ALog, WSJT-X, JTAlert A Powerful Combination](#)

Probably the easiest way to use WSJT-X FT8 is to use it as a stand alone program. It has it's own internal logging. I have an article here: [WSJT-X FT8 and the Icom 7300 the Easy Way!](#)

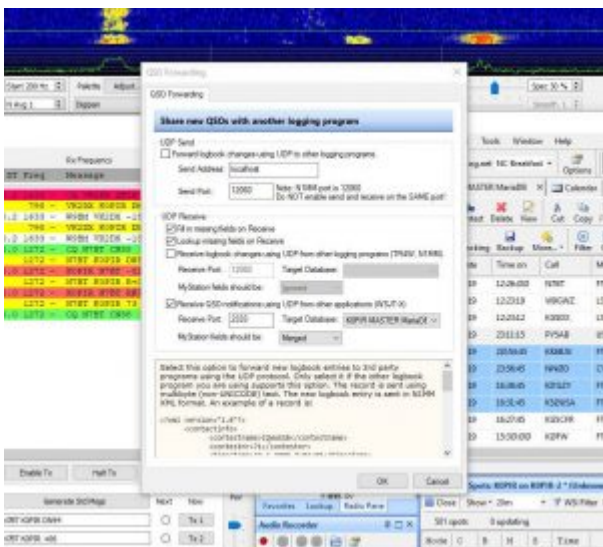
WSJT-X and HRD Logbook Screen Captures



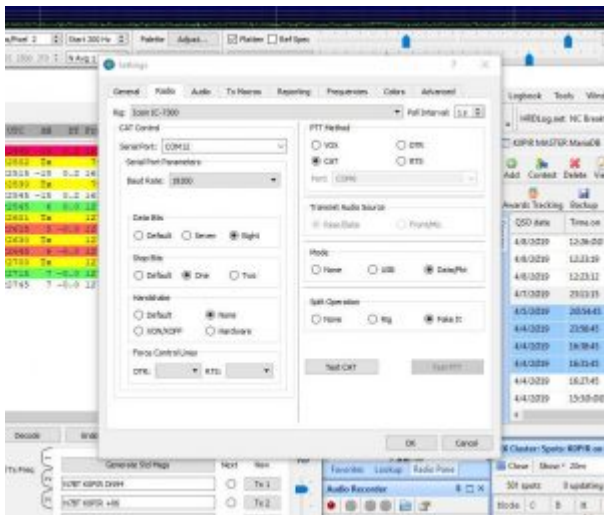
HRD Connect Window



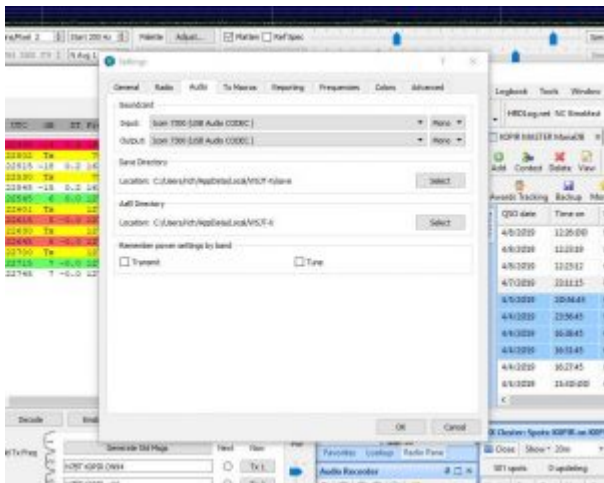
HRD Rig Control



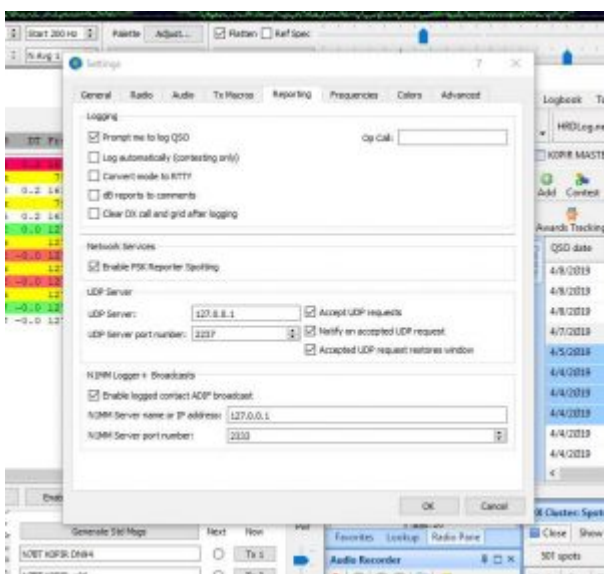
HRD Logbook QSO Forwarding



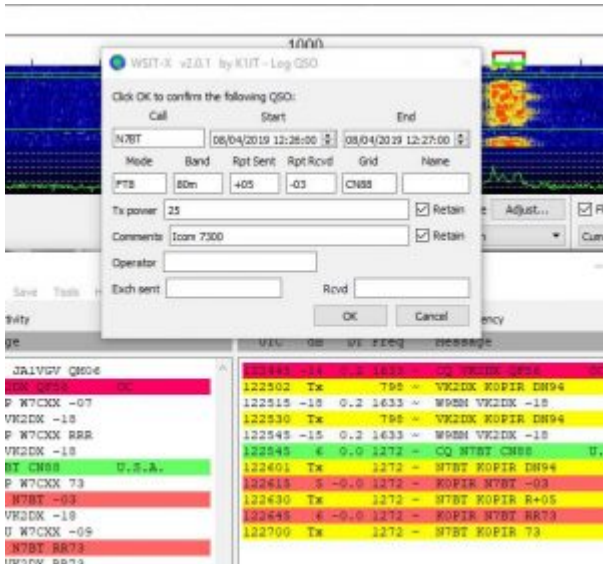
WSJT-X Radio Tab



WSJT-X Audio Tab



WSJT-X Reporting Tab



WSJT-X Logging Window

Icom 7300 and Icom 7610 Screen Captures

If you are using either of the latest Icom radios you'll need to use "Unlink from [REMOTE]". See my [Icom 7300 screen captures](#) and [Icom 7610 screen captures](#).

Video

JT-Alert

Many Hams use [JT-Alert](#) and it can be added to this easily. Just download and install JT-Alert. When I use JT-Alert I set it up to log into HRD Logbook, therefore disabling QSO Forwarding in HRD Logbook.

Thank you

If you have any questions, please ask them here. I prefer the comment section here or in YouTube over e-mail because your comments and questions will help others as well.

Thank you for subscribing to this website. I appreciate the comments, questions and suggestions. You can follow me on [Twitter](#), [Facebook](#), [Instagram](#) and [YouTube](#) if you have those.

73 – Rich, K0PIR

Sources:

[WSJT-X Download](#)

[Ham Radio Deluxe](#)

[Icom 7300 Ham Radio Deluxe v6.5 Rig Control Quick Start](#)

[Ham Radio Deluxe Digital Master 780 DM780 Custom Look](#)

[Digital Master 780 DM780 CW Decode](#)

[Digital Master 780 DM780 CW Send CW Interface – How To](#)