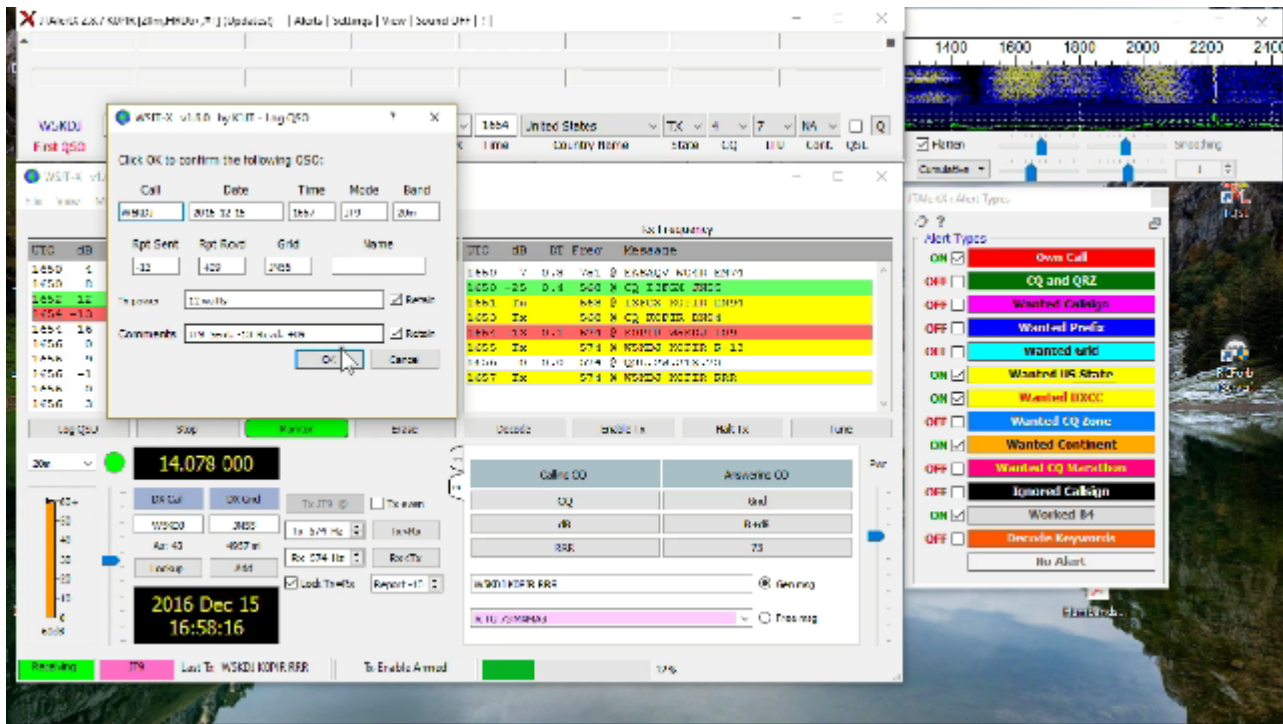


WSJT-X JT-ALERT Automatically Logs To HRDLog



W
S
J
T
-
X
J
T
-
A
l
e
r
t

are my two new favorites. When I got my Icom 7300, one of the first JT65 programs I installed was JT65 HF HB9HQX. It works great with the Icom 7300 and HRD. I made a video clip you can see [here](#).

Later I wanted to try WSPR mode and I found a simple program to use, WSJT-X. It does JT65 and JT9 too. I had a lot of fun using it and it even works on my Raspberry Pi 3. I made a short clip using it on the Raspberry Pi and you can see it [here](#).

WSJT-X JT-ALERT

So here's the rub, I like WSJT-X and using JT65 and JT9, but I don't like the logging. I have to import my log from that program into HRDLog. I just purchased the latest version of Ham Radio Deluxe and I really would like to use the logbook without having to import QSO's.

That's where JT-Alert comes in. JT-Alert will take my QSO's from WSJT-X and put them into HRDLog automatically. How cool is that? Not only that, but JT-Alert has some other great functions too. Like alerts! HELLO!!! It actually speaks to me when a station I want comes on the air. And hold on, because it does much more!

WSJT-X Install

Before installing the WSJT-X program, download and install a time keeper. Correct computer time is essential (no way around it) when using these modes. I use NetTime and you can download it [here](#).

After you have NetTime, download and install WSJT-X from [here](#). It's a simple install, do this first.

JT-Alert Install And Setup

Go to HamApps.com. You'll get the JT-Alert program and two additional support files. There's the callsign database and sounds.

Install Instructions for first JT-Alert install.

- Download HamApps_JTAlert_latest version_Setup.exe
- Run HamApps_JTAlert_latest version_Setup.exe to install
- Install the Sound and Database files
- Start JTAlert

NOTE: If you are using HRD, have it open and running before starting WSJT-X and JT-Alert.

For setting things up, watch this:

Here is an excellent source for changing the Wide Graph in WSJT-X. I've used it and it has been very helpful. [WSJT-X User](#)

[Guide.](#)

If you have any questions or comments, please make them below.
Thanks for watching and best 73 and good DX.